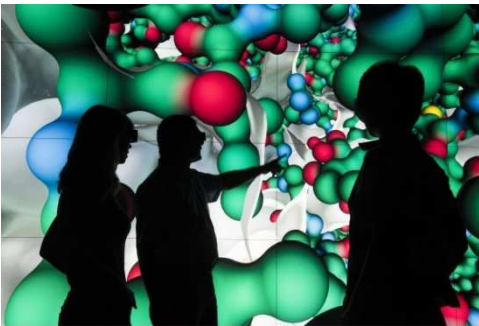




**THE INTERNATIONAL  
MEETING FOR HPC,  
SIMULATION, BIG DATA**

27 & 28 June 2017  
Ecole Polytechnique, Palaiseau, France

## Numerical simulation, Cloud and Big Data: "à votre santé"!



@ Inria

As every year, the TERATEC Forum, which will take place next June on the campus of the Ecole Polytechnique, shows the latest advances in terms of HPC, Big Data and numerical simulation. A perfect opportunity to demonstrate the beneficial contribution of these technologies in the daily life.

The health sector is particularly concerned with a great number of themes this year in plenary sessions as in technical workshops:

**The health sector uses digital simulation, cloud, Big data, to better search, understand and ... act!**

### → PLENARY SESSION - TUESDAY 27 JUNE

■ **Understanding vascular disease progression via advanced computational modeling**

By Jay D HUMPHREY, John C. Malone Professor of Biomedical Engineering, YALE

[Read more >>>](#)

■ **Science Platform and Highly Scalable Cloud-based Framework for HealthTech Data Processing**

By Francois ANDRY, Sr. Director, Enterprise Architecture, PHILIPS Healthcare

[Read more >>>](#)

### → TECHNICAL WORKSHOP A2- TUESDAY 28 JUNE MORNING

■ **Health and personalized medicine in 2025**

Chaired by Claude CAMOZZI and Gérard ROUCAIROL, TERATEC

[Read more >>>](#)

**And of course, Teratec Forum will also propose:** An exhibition, plenary sessions, technical workshops, thematic areas, without forgetting the six trophies of Numerical Simulation awards, organized in partnership with L'Usine Nouvelle et L'Usine Digitale ([For more information, click here](#))

Everything you have to know about HPC (High Performance Computing), simulation and Big Data will be at your disposal during the 2 days on the show.

## Announce the TERATEC FORUM 2017 in your next agendas

To find out more on: [Forum Teratec](#)

**PRESS Contact**

[Colette REY](#)

Tel : +33 (0)9 51 70 20 57

Cell: +33 (0)6 14 73 97 43

**TERATEC Contact**

[Jean-Pascal JEGU](#)

Tel : +33 (0)9 70 65 02 10

Cell: + 33 (0)6 11 44 49 59