

Forum Teratec

Unlock the future!

ÉCOLE POLYTECHNIQUE 11 & 12 JUIN 2019
PALAISEAU-FRANCE JUNE 11 & 12



WISEO ALTA METRIS

**PREDICTIVE MAINTENANCE
OF RAILWAYS VIA DRONES**

FRÉDÉRIK VAUTRAIN, Société VISEO



- Experienced Director Data Science with a demonstrated history of working in the information technology and services industry. Skilled in Industry, E-commerce, Statistical Modeling, Big Time series, Entrepreneurship, and Data Science Management. Strong research professional graduated from PhD Maths Appli Université Dauphine - HEC Paris Challenge +
- **Linked-in** : <https://www.linkedin.com/in/frédéric-vautrain-175552/>

GUILHEM VILLEMIN, SOCIÉTÉ ALTAMETRIS



➤ Guilhem Villemin, docteur ingénieur centralien, s'appuie sur son expertise dans le domaine du Traitement du Signal et des Images, reconnue au sein d'un large réseau (Ecoles, Universités, Laboratoires, Entreprises, Collectivités). Il a pu élargir son champ de compétences au design de système de diagnostic et au Système Ferroviaire, plus focalisé sur la Surveillance et la Maintenance. Dans le cadre de ses missions, il a développé une expertise intégrée au monde ferroviaire en vision industrielle, les systèmes de mesure et sur l'usage des drones. Aujourd'hui CTO d'Altametriss, il pilote l'ensemble des programmes de R&D de la société, pour le développement d'applications et de systèmes.

➤ **Linked-In** : <https://www.linkedin.com/in/guilhem-villemin-71b97b8a>

VINCENT THAVONEKHAM, Société VISEO

Microsoft Regional Director & Microsoft MVP Azure



Speaker – dont keynote 15000 participants durant MS Experiences, avec VP Exec MS Corp

 www.thavo.com

 @vThavo

Expertise Azure reconnue jusqu'à Seattle !



-  2017/18: **Microsoft Regional Director**
- 2015,16,17,18, 19: Azure MVP Award
- 2015: MS p-Seller **Azure + DevOps + Data/AI**
- 2015: WPC Orlando: Top 5 best pSeller Fr
- 2013-2015 : Microsoft vTSP Azure



Microsoft Regional Director

CERTIFICATIONS / DEGREES:

- PgD & MSc IT in Intelligent Systems (distinction & 1st rank) ; BEng Honors
- ITIL v3, PRINCE2, ScrumMaster,
- Microsoft Certified Professional

Author & co-author : DevOps & Azure

- (France & international www.aka.ms/aiplybook)
- Published books, white paper & magazines
 - Round Table panels including live streaming (Gene Kim, Best seller 'The Phoenix project')

Activités chez VISEO

- Responsable du partenariat Microsoft France et Corp
- Partenaire OPC UA (standard mondial IoT industriel)
- Etablissement de stratégies pour obtenir les médailles :
 - . Microsoft Gold Partner
 - . **N°1 monde en « Azure IoT Central »**
 - . N°1 France en Microsoft AI
 - . **Acteur majeur en Azure IoT en France et IoT Edge**
 - . Co-écriture livres MS Corp
- Missions d'audit / Conseil
- PoC Innovants en IoT Edge et AI et Quantique

Microsoft Regional Director:

Nommé par Microsoft Corp à travailler sur la stratégie sous NDA de Microsoft Corp et ses clients clefs. Cercle fermé limité à 500 individus dans le monde

VISEO
DIGITAL MAKERS

2018 Microsoft
Partner of the year



Intelligence Artificielle



VISEO

DIGITAL MAKERS

2018 Microsoft Partner of the year



Intelligence Artificielle

Microsoft Partner



Partenaire de l'année 2019 Intelligent Cloud France

PREDICTIVE MAINTENANCE - BACKED BY OUR EXPERTISE IN ARTIFICIAL INTELLIGENCE



analysis

Better knowledge and understanding of your data, closer to similar profiles, reduced number of variables



interpretation

Interactive visual representation, abnormal behavior detection, sorting of data in defined classes



prediction

Analysis, advanced mathematical modelling and forecasting (rare events, evolution of values in time...)



technology

Optimization of data processing, architecture, collection infrastructures

MAINTENANCE

➤ Predictive maintenance

- minimize the number of unexpected breakdowns and maximizing asset uptime which improves asset reliability
- reduce operational costs by optimizing the time you spend on maintenance work (in other words, doing maintenance only when you need to do it practically eliminates any chance of you wasting time doing excessive maintenance)
- improve your bottom line by reducing long-term maintenance costs and maximizing production hours

REACTIVE



Fix when it Breaks

PREVENTIVE



Maintain it at regular interval

PREDICTIVE



Predict exactly when it will break

Prescriptive



Identify lever for action to avoid predictive failure

DATA FOR MAINTENANCE PREDICTIVE/PRESCRIPTIVE

➤ Predictive maintenance: using condition-monitoring sensors



Image / video



Vibration



Temperature



Pressure



Sound



Oil

DATA FOR MAINTENANCE PREDICTIVE/PRESCRIPTIVE

λ Predictive maintenance: using condition-monitoring sensors



Image / video



Vibration



Temperature



Pressure



Sound



Oil

λ Prescriptive maintenance: using condition-monitoring sensors + external data



Machine Type



Work order



Climate



Usage traffic



Raw Material

DATA FOR MAINTENANCE PREDICTIVE/PRESCRIPTIVE

λ Predictive maintenance: using condition-monitoring sensors



Image / video



Vibration



Temperature



Pressure



Sound



Oil

λ Prescriptive maintenance: using condition-monitoring sensors + external data



Machine Type



Work order



Climate



Usage traffic



Raw Material

**DATA SCIENCE
&
ARTIFICIAL
INTELLIGENCE**

ARTIFICIAL INTELLIGENCE: TWO SCENARIOS

Adequacy between the available information and the use case

- Detect precisely a phenomenon
- Explain a phenomenon to identify leverage

Use cases



Algorithm

- Neural networks- Deep learning
- Modeling-regression



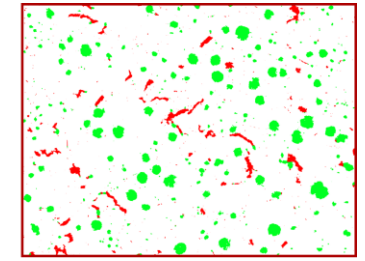
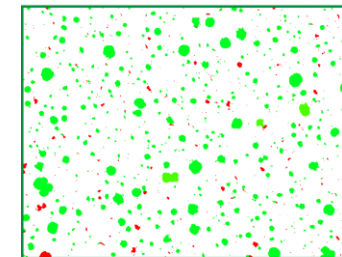
Data

Detect which insulator has default

Many images to collect and annotate for **to learn**



Why is a metal plate defective?



Few images needed: **Modeling** Forms

OUR APPROACH

Collaborative and iterative



FRAME

- Context understanding
- Identification of scenarios on the components to implement
- IT environment
- Scope of the project
- Success Criteria
- Planning and main hypothesis for Next Steps



COLLECTE/EXPLORE

- Exploratory analysis in the Lab to test the value of the data.
- Produce feature Engineering(enrichment & selection),
- Test and train several Models and keep the best,
- Datavisualisation development



SCALE

- Extension of the use case and the model beyond its initial Perimeter
- Industrialization of the production of analyses and recommendations.



PERFORM

- Supervise and monitor the decision-making system and Associated Models
- disseminate information and actions throughout tea Organization and ensure Adoption.

➤ **START SMALL**

To Secure the economic impact and return on investment of thesis projects;
Quickly detect the lack of value.

➤ **THINK BIG**

Aiming for an industrializable Device by design.



AI is an old story

WHY this hype ?



ARTIFICIAL INTELLIGENCE / INTELLIGENT EDGE

➔ . EXEMPLE OF THE « MARKETING » HYPE

- . WHAT IS IT ?
- . WHY ?
- . HOW ?

EXAMPLE OF THE « MARKETING » HYPE « JUST » ON THE IOT & ARTIFICIAL INTELLIGENCE TOPIC

Vincent THAVONEKHAM @vThavo · Apr 13
 Au #sido19, le plus grand Showroom d'Europe en #IA #robots #IoT, j'ai eu l'honneur de parler du sujet « Quels systèmes et applications autonomes pour des environnements industriels complexes ? », retransmis en direct ou en #podcast sondekla.com/user/event/9774 #mvpbuzz

Translate Tweet

Become **Amazing** Tous les salariés France

Webinar 14 mars 19: *VISEO Intro en AI et REX*
Frédéric Vautrain, Dir. Datascience
Vincent Thavonekam, MS Regional Dir. MVP Azure

Diner Décideurs IT (DSI/RSSI) en Vaucluse

23 mai - 18 h 30 min / 23 h 00 min

Dîner-Croisière Décideurs IT 23 Mai 2019 Avignon
 Réservé aux décideurs IT (DSI, RSSI, CDO, CTO...)
 Rappel: Adhérents DSI/RSSI CIP 2019 (gratuit) Décideurs IT (Dsi, RSSI, CDO, CTO...) le CIPMed et ses partenaires ont le plaisir de vous inviter au 1er Dîner DIT d'Avignon Au cours de la croisière sur le Rhône durant laquelle nous [...]



Cercle de confiance Numérique des Industries Stratégiques

VIVA TECHNOLOGY
 May 16 - 18 2019, Paris

The world's rendezvous for startups & leaders

GET YOUR PASS

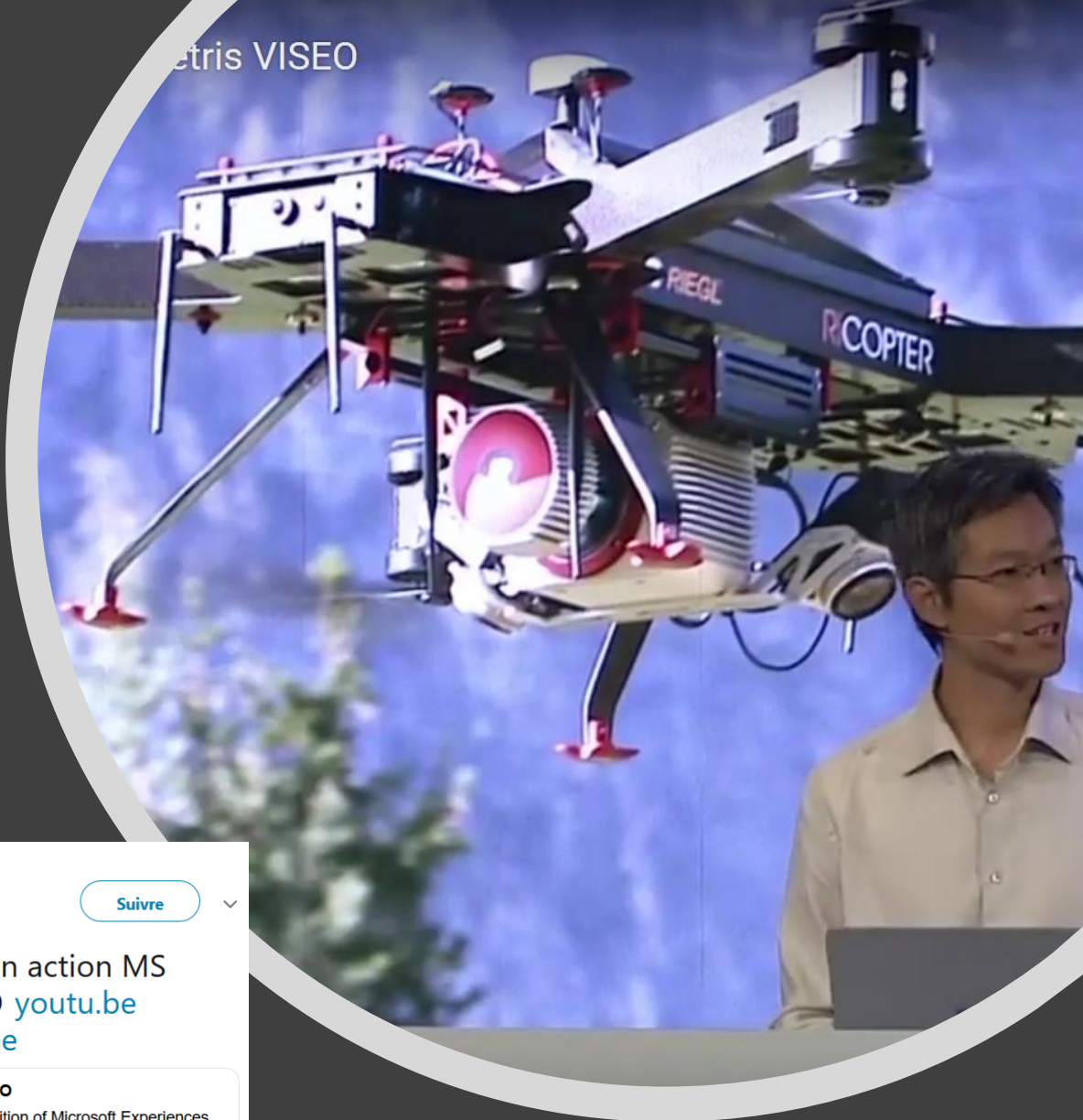
100,500 Attendees | 9,000 Startups | 1,900 Investors | 1,900 Journalists | 125 Countries



Teratec Pôle européen de compétence en simulation numérique haute performance

WISEO on Keynote

- Event of 15000 people over 2 days
- It is a 10 000 m² event
- Theater of 4000 people
- 200 000 people connected on Live TV
- WISEO : IoT & AI on Julia White' keynote (Vice-President Corporate Microsoft Azure worldwide).



Ranga Vadlamudi

@RangaVadlamudi

Principal Program Manager Microsoft Azure IoT Engineering. #Microsoft #Azure #IoT. Simplicity is the ultimate sophistication.

📍 Redmond, WA

🌐 microsoft.com



Ranga Vadlamudi

@RangaVadlamudi

Suivre

Pretty cool!! #azureiot edge in action MS Experiences Altametriss WISEO youtu.be/uC6skEWqgdg via @YouTube



MS Experiences Altametriss WISEO

WISEO was present at the 2018 edition of Microsoft Experiences, represented by Vincent Thavonekham, our Microsoft Regional Director & MVP Azure, who spoke at...

[youtube.com](https://youtu.be/uC6skEWqgdg)

17:00 - 2 févr. 2019



WISEO & ALTAMETRIS

ALTAMETRIS, UNE SOCIÉTÉ DE SNCF RÉSEAU



AI + IoT + 'Intelligent Edge'



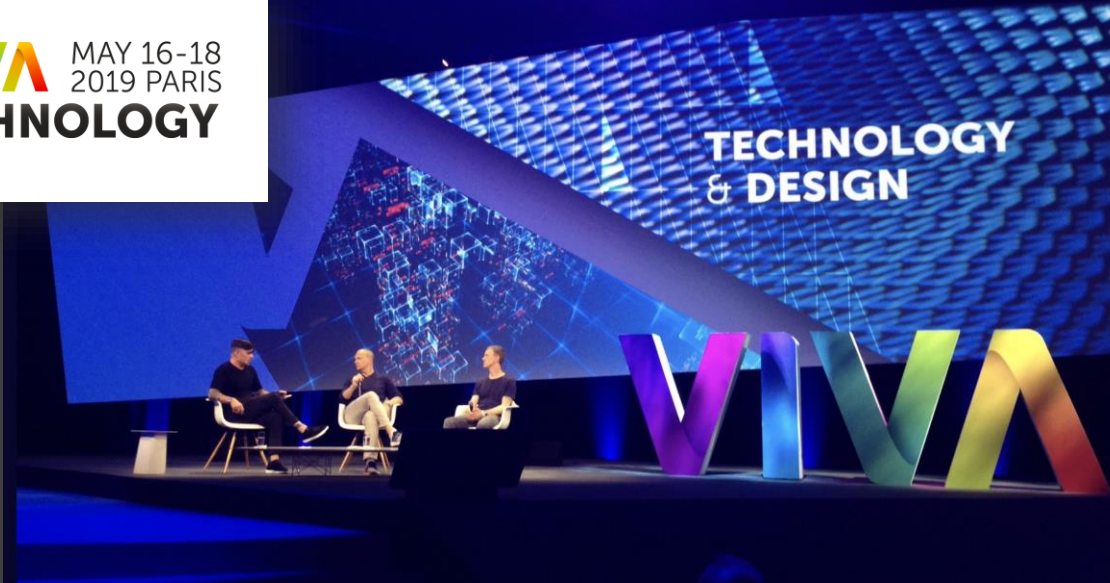
Vincent Thavonekham, MVP, MS Regional Director



Julia White Keynote, VP corp Azure worldwide
4000 attendees, 200000 on LiveTV. Video

<https://youtu.be/uC6skEWqgdg?t=370>

VIVA MAY 16-18
2019 PARIS
TECHNOLOGY



- Event of 124000 people over 3 days
- 2500 journalists
- 231 millions people of social network
- 3 billions of unique visitors on the Internet !
- The SNCF was the number one in terms of buzz

VIVATECH 2019 : JOUR 2 | #DIGITAL X

https://www.digital.sncf.com/actualites

DIGITAL SNCF EST UN SITE DE SNCF

#DIGITALSNCF

Drones et IOT révolutionnent les métiers de la maintenance

Guilhem Villemin, R&D Division Manager chez Altametriz et Vincent Thavonekham, Directeur régional de Viseo ont expliqué comment l'arrivée des technologies a rendu la maintenance SNCF plus sécurisée et moins difficile.

VOTRE AVIS ?

↑

<https://www.digital.sncf.com/actualites/vivatech-2019-jour-2>



ARTIFICIAL INTELLIGENCE / INTELLIGENT EDGE

. EXEMPLE OF THE « MARKETING » HYPE

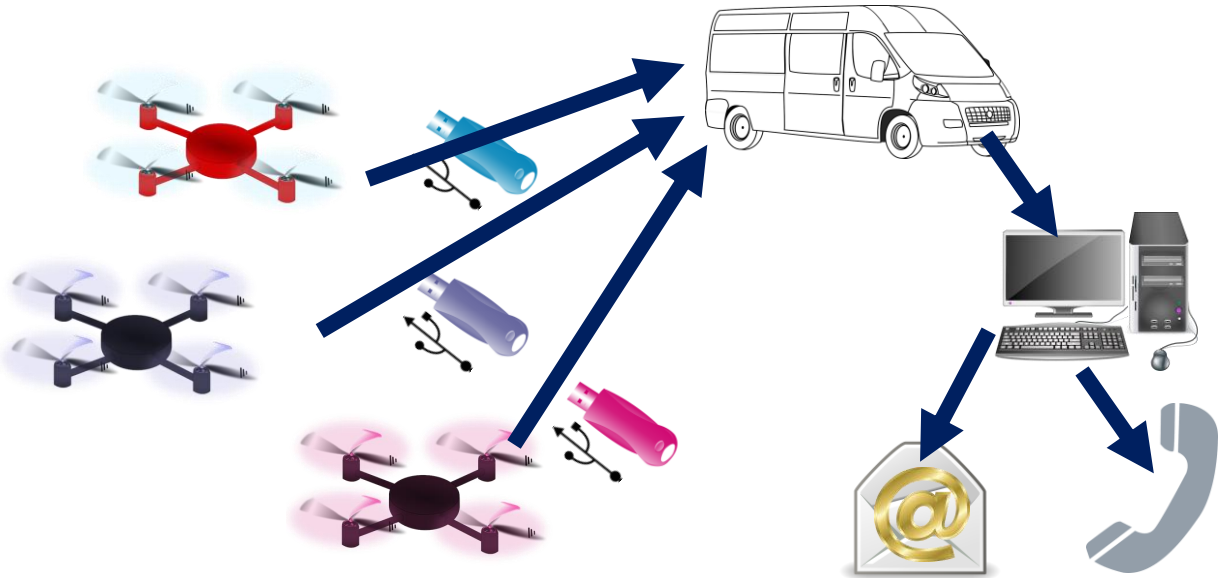
➔ . **WHAT IS IT ?**

. WHY ?

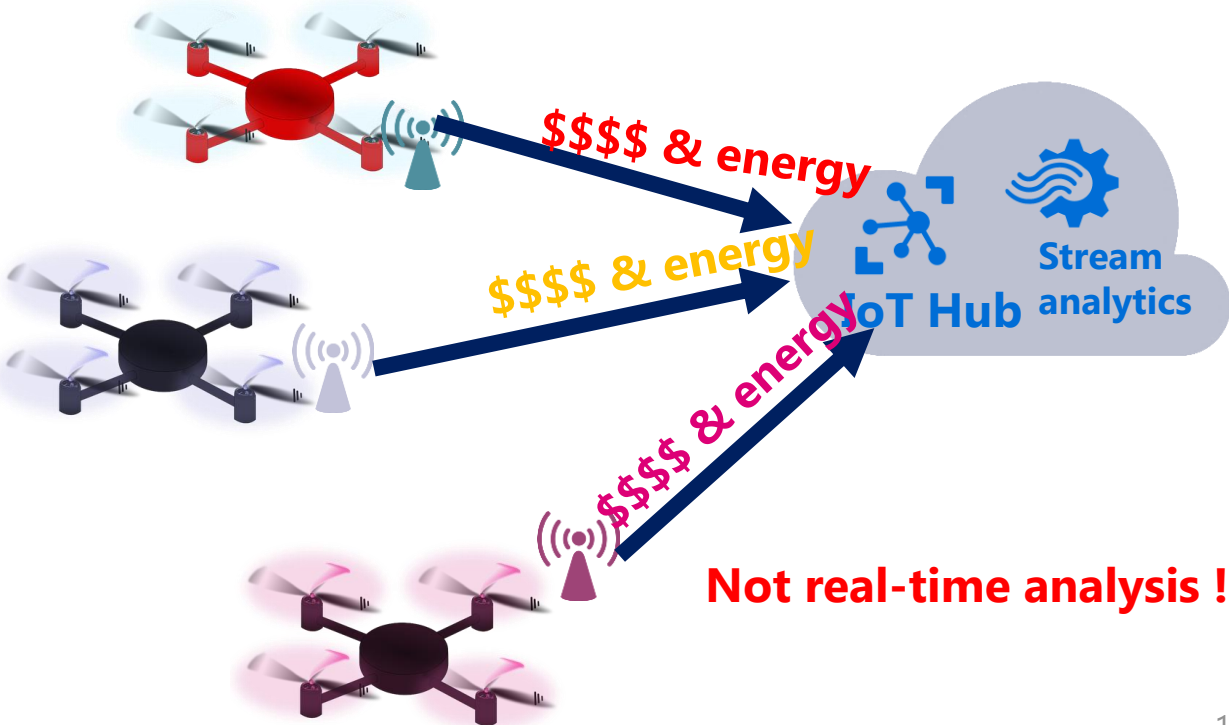
. HOW ?

Without Intelligent Edge

WITHOUT INTERNET
weeks



WITH INTERNET
\$\$\$\$ & energy

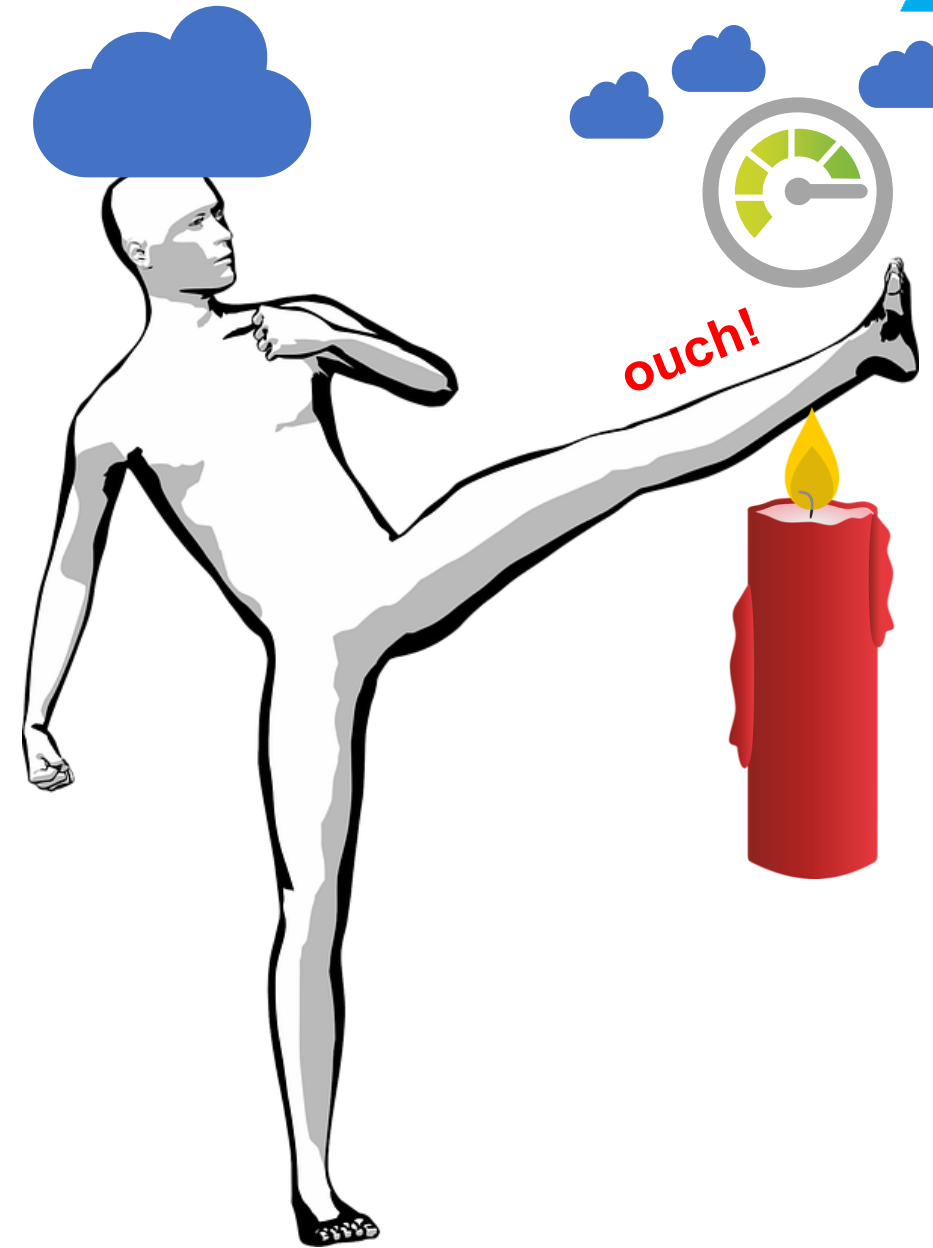
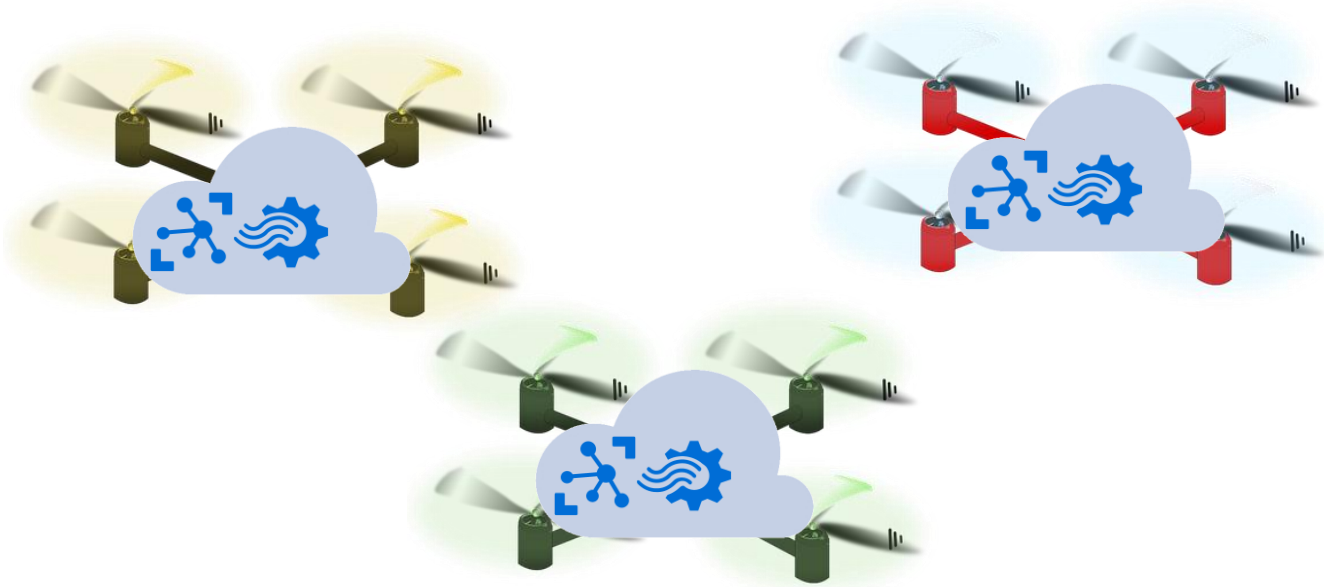


GAIN FOR ALTAMETRIS / SNCF

AVEC INTELLIGENT EDGE

« Simple processing » near-real-time

« Complex processing » in central





ARTIFICIAL INTELLIGENCE / INTELLIGENT EDGE

. EXEMPLE OF THE « MARKETING » HYPE

. WHAT IS IT ?

➔ . **WHY ?**

. HOW ?

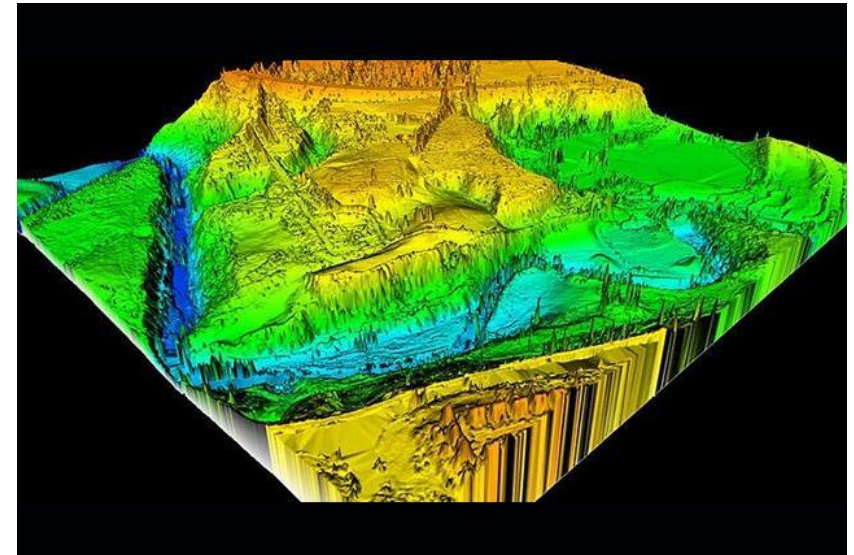
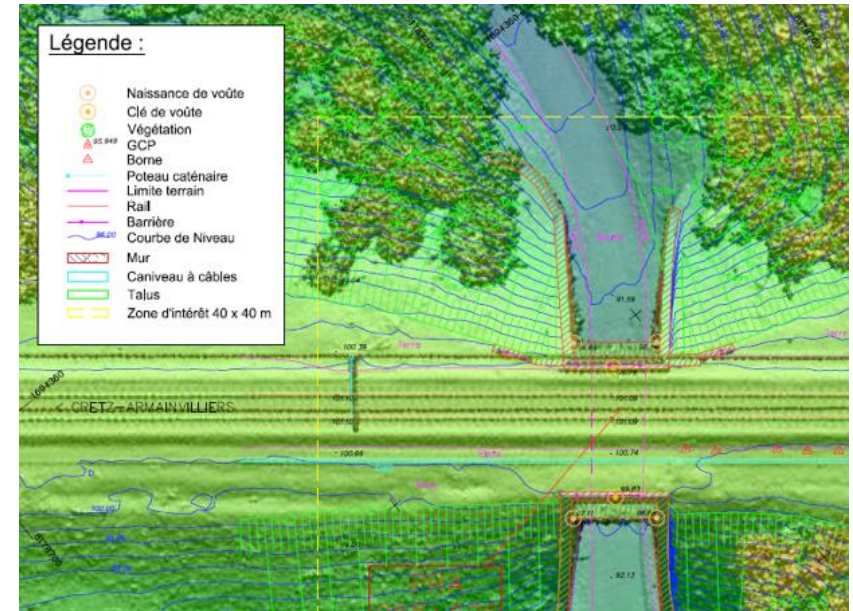
1. Capturing the massive data / topological

- Images, video
- Head maps
- ...

2. Have a Digital Twins of the reality

- 3D-clouds of laser dots
- Infinite « zoom »
- ...

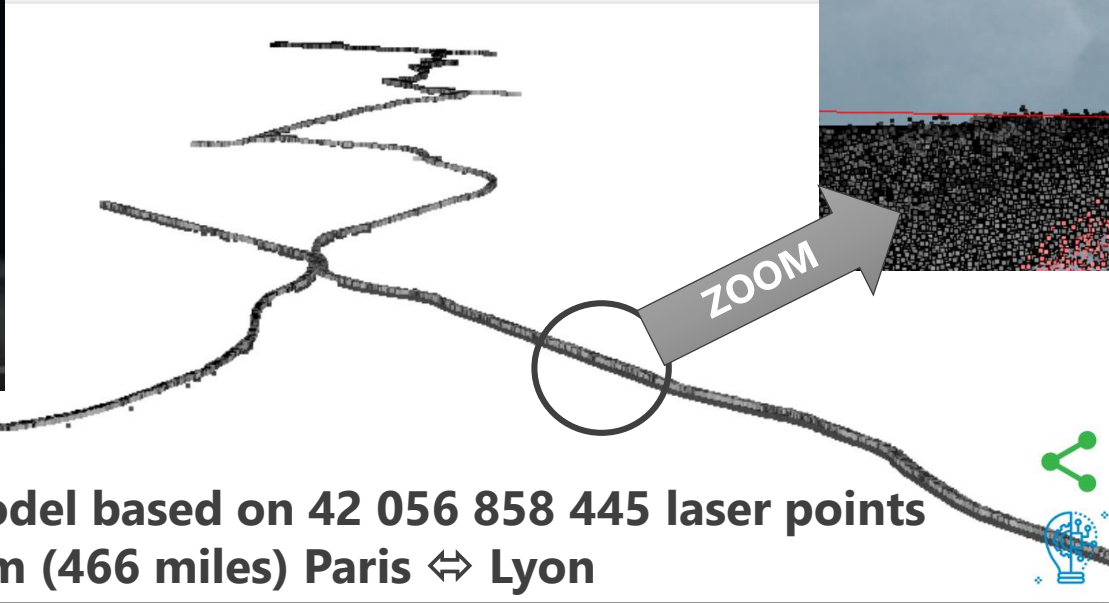
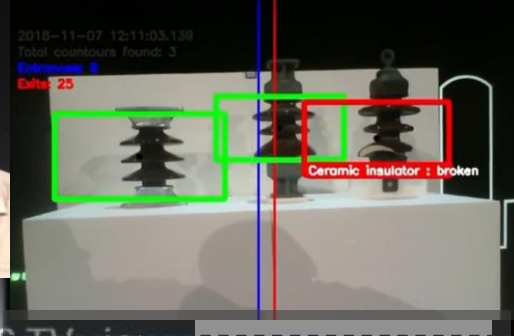
3. Inspection / Detection / prediction of failiure



λ Massive projet :

www.youtube.com/watch?v=uC6skEWqgdg&t=87s

- Asset management 30 000 km (19000 Miles) railway nationwide
- Training VR / Maintenance → "Experts à distance"
- ½ million € drone
- IoT with trains & drones



3D model based on 42 056 858 445 laser points
750 km (466 miles) Paris ↔ Lyon





ARTIFICIAL INTELLIGENCE / INTELLIGENT EDGE

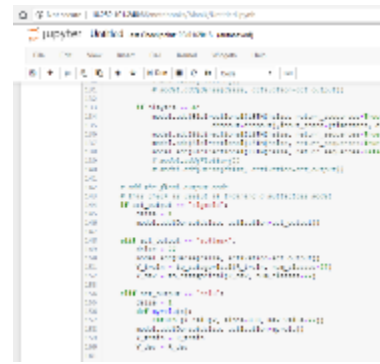
. EXEMPLE OF THE « MARKETING » HYPE

. WHAT IS IT ?

. WHY ?

➔ . **HOW ?**

OVERVIEW : LIFECYCLE OF AN AI



MASSIVE DATASET

› Thousands of images & video



› Combined with real insulators

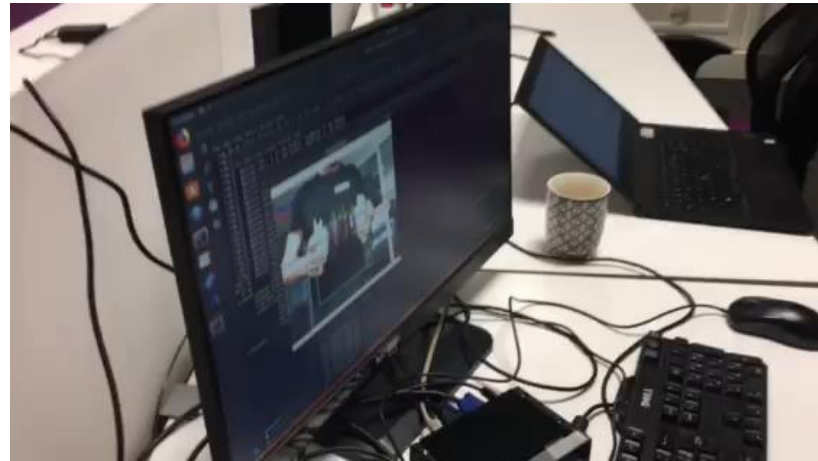


› Labelling with rectangles



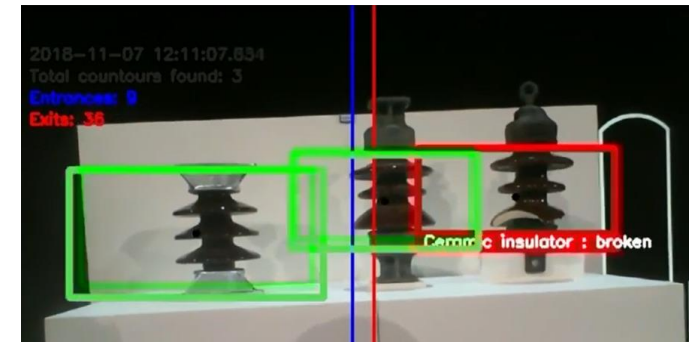
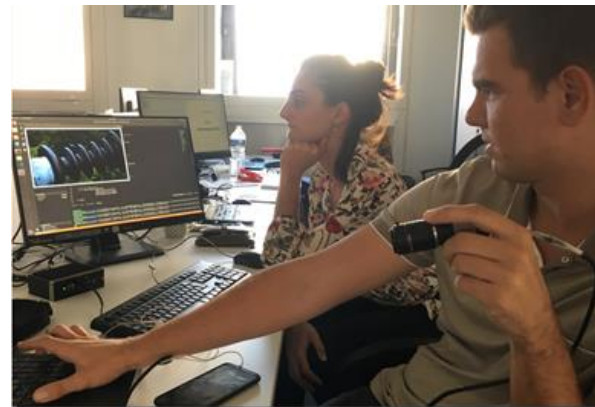
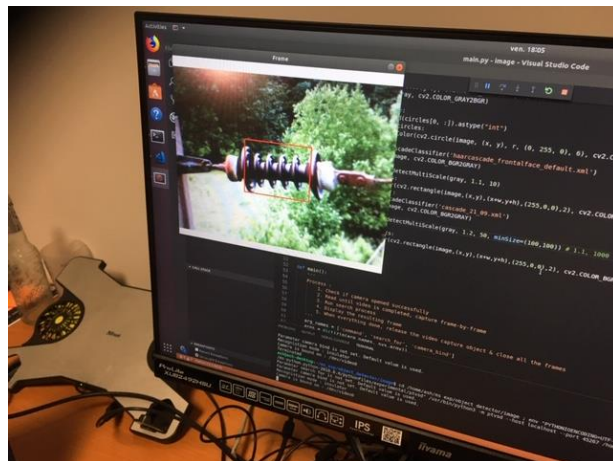
ALGORITHM

Weeks of researches



Credit Guilhem Villemin, CTO ALTAMETRIS

Numerous iterations with ALTAMETRIS / SNCF



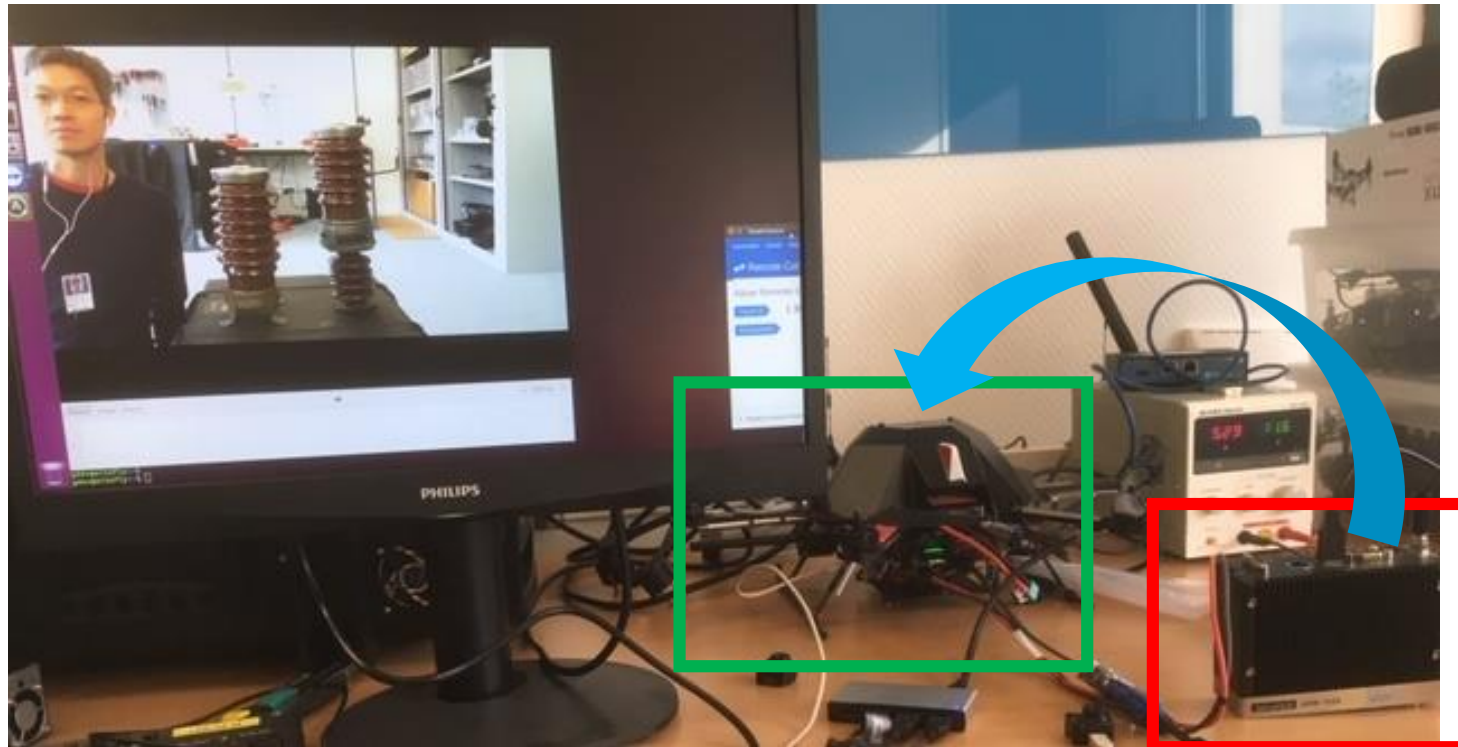
Example : <https://youtu.be/uC6skEWqgdg?t=370>

MANUAL TRANSFER TO THE DRONE VS AUTOMATED DEPLOYMENT

SOIT DIRECTEMENT de la box ADVANTECH vers le DRONE

➤ Either **DIRECT** copy/past from ADVANTECH box to the DRONE

➤ Or, via AZURE IoT Edge (& DOCKER/LINUX) via **DevOps**



Microsoft Azure

Home > ms-exp2018-iot-hub - IoT Edge > Device details

Device details

10-Drone-Isolateur

Save Set modules Device twin Regenerate keys Refresh

Edge runtime response

N/A

Modules IoT Edge hub connections Deployments

Verify that your modules are included in the deployment, and whether your modules have been reported.

NAME	TYPE	SPECIFIED IN DEPLOYMENT
SedgeAgent	IoT Edge System module	✓ Yes
SedgeHub	IoT Edge System module	✓ Yes
module-telemetry	IoT Edge Custom module	✓ Yes
Module-AI_2_Artem_PersonnalisePyth...	IoT Edge Custom module	✓ Yes
Module-Camera	IoT Edge Custom module	✓ Yes
Module-AI_1_AzureCustomVision	IoT Edge Custom module	✓ Yes
Module-LocalStorage-MySQL	IoT Edge Custom module	✓ Yes



CONCLUSION

CONCLUSION

- The IoT and Intelligent Edge are a reality
- AI is the next BIG THING
- There is a robust approach, but is NO generic solution
Need « real » DataScientists with solid statistical & mathematical background AND Knowledge Expertise
- And already present in Factories for many years



In 2014 “Hannover Fair trade show”, Siemens/KUKA predicted the future of the industries.

Where efficiency is sought for many decades :
Smart Factory : Cloud + IoT + 3D + training





QUESTIONS

HARDWARE

